

# Natural changes of population 1961 – 2022

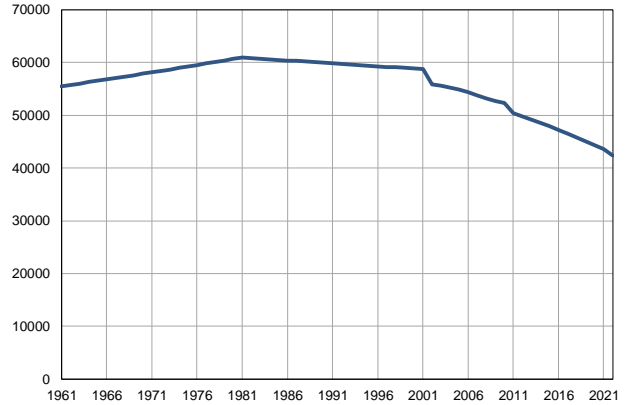
Profile  
July 2023

## Smederevska Palanka

	1961	2022
Population size	55488	42400
Livebirths, Number	852	332
Deaths, Number	585	862
Natural increase, Number	267	-530
Infants deaths, Number	44	1
Livebirths, per 1,000 population	15	8
Deaths, per 1,000 population	11	20
Natural increase, per 1,000 population	5	-13
Infants deaths, per 1,000 livebirths	52	3

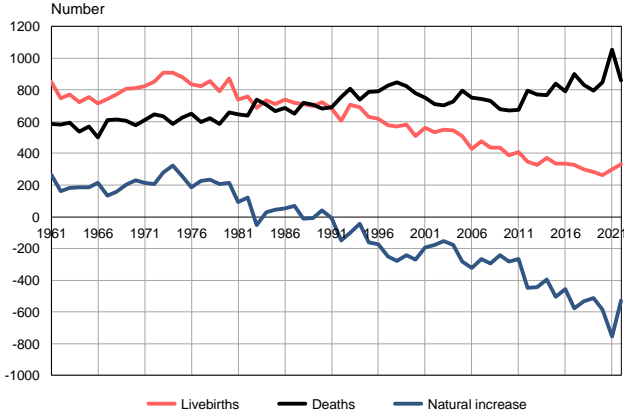
Source: Vital Statistics, SORS

Population size, 1961–2022



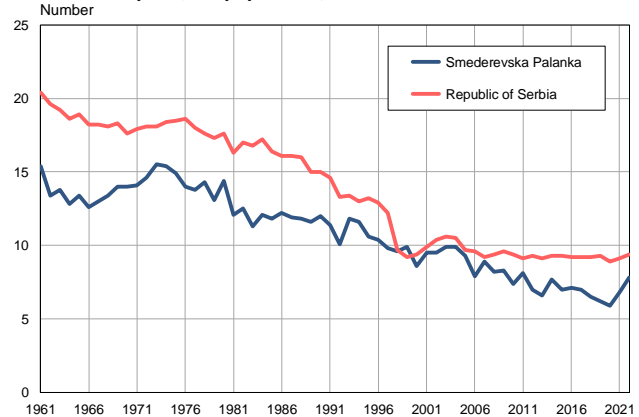
Source: Vital Statistics, SORS

Livebirths, deaths and natural increase, 1961–2022



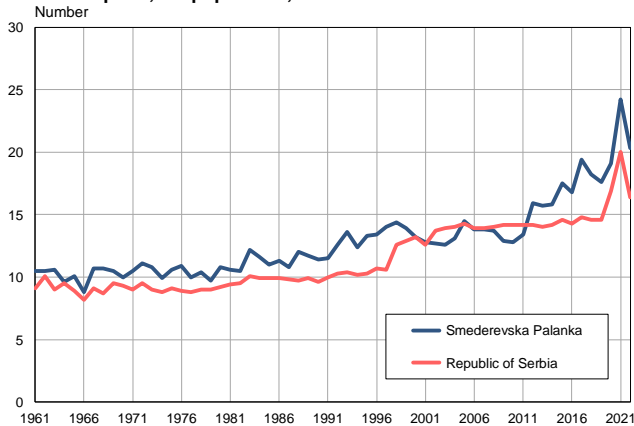
Source: Vital Statistics, SORS

Livebirths per 1,000 population, 1961–2022



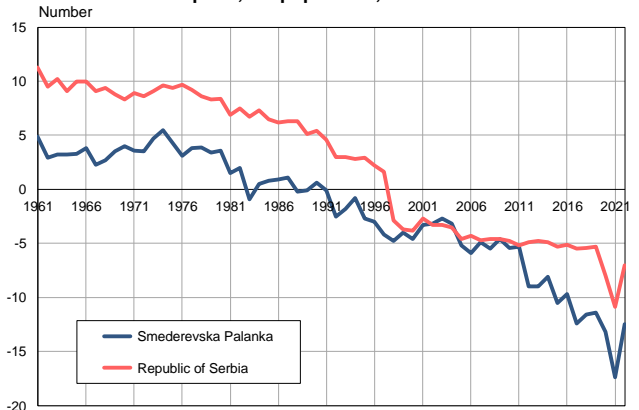
Source: Vital Statistics, SORS

Deaths per 1,000 population, 1961–2022



Source: Vital Statistics, SORS

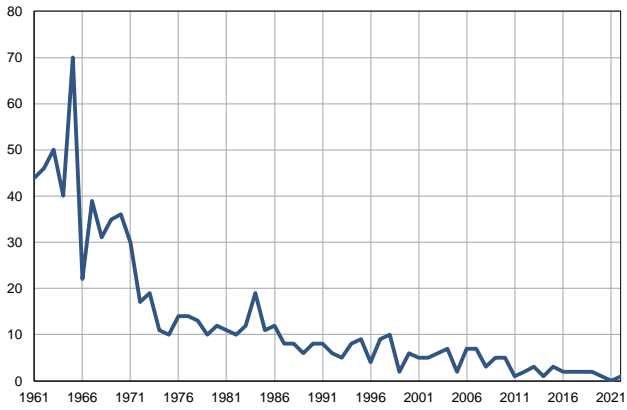
Natural increase per 1,000 population, 1961–2022



Source: Vital Statistics, SORS

**Infants deaths, 1961–2022**

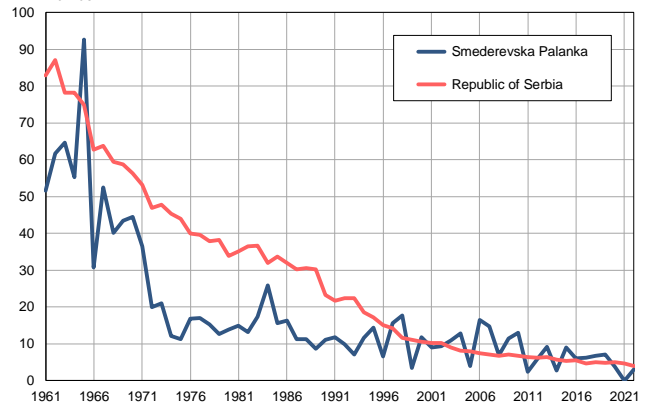
Number



Source: Vital Statistics, SORS

**Infants deaths per 1,000 livebirths, 1961–2022**

Number



Source: Vital Statistics, SORS

**Table. Natural changes of population, Smederevska Palanka**

Year	Number of population	Livebirths	Deaths	Natural increase	Infants deaths	per 1000 population			Infant deaths per 1000 livebirths
						Livebirths	Deaths	Natural increase	
1961	55488	852	585	267	44	15.4	10.5	4.9	51.6
1962	55750	745	583	162	46	13.4	10.5	2.9	61.7
1963	56013	773	592	181	50	13.8	10.6	3.2	64.7
1964	56275	723	538	185	40	12.8	9.6	3.2	55.3
1965	56538	756	570	186	70	13.4	10.1	3.3	92.6
1966	56800	714	500	214	22	12.6	8.8	3.8	30.8
1967	57062	744	611	133	39	13.0	10.7	2.3	52.4
1968	57325	771	613	158	31	13.4	10.7	2.7	40.2
1969	57587	807	606	201	35	14.0	10.5	3.5	43.4
1970	57850	810	579	231	36	14.0	10.0	4.0	44.4
1971	58112	822	609	213	30	14.1	10.5	3.6	36.5
1972	58395	853	646	207	17	14.6	11.1	3.5	19.9
1973	58679	909	632	277	19	15.5	10.8	4.7	20.9
1974	58962	910	586	324	11	15.4	9.9	5.5	12.1
1975	59245	882	627	255	10	14.9	10.6	4.3	11.3
1976	59529	835	649	186	14	14.0	10.9	3.1	16.8
1977	59812	823	598	225	14	13.8	10.0	3.8	17.0
1978	60095	857	622	235	13	14.3	10.4	3.9	15.2
1979	60378	791	586	205	10	13.1	9.7	3.4	12.6
1980	60662	871	658	213	12	14.4	10.8	3.6	13.8
1981	60945	740	645	95	11	12.1	10.6	1.5	14.9
1982	60833	758	638	120	10	12.5	10.5	2.0	13.2
1983	60720	688	739	-51	12	11.3	12.2	-0.9	17.4
1984	60608	736	706	30	19	12.1	11.6	0.5	25.8
1985	60496	711	667	44	11	11.8	11.0	0.8	15.5
1986	60383	739	685	54	12	12.2	11.3	0.9	16.2
1987	60270	717	650	67	8	11.9	10.8	1.1	11.2
1988	60158	710	720	-10	8	11.8	12.0	-0.2	11.3
1989	60046	697	705	-8	6	11.6	11.7	-0.1	8.6
1990	59934	722	681	41	8	12.0	11.4	0.6	11.1
1991	59822	682	689	-7	8	11.4	11.5	-0.1	11.7
1992	59714	604	755	-151	6	10.1	12.6	-2.5	9.9
1993	59604	706	808	-102	5	11.8	13.6	-1.8	7.1
1994	59497	692	737	-45	8	11.6	12.4	-0.8	11.6
1995	59388	628	788	-160	9	10.6	13.3	-2.7	14.3
1996	59280	619	792	-173	4	10.4	13.4	-3.0	6.5
1997	59171	579	829	-250	9	9.8	14.0	-4.2	15.5
1998	59062	569	848	-279	10	9.6	14.4	-4.8	17.6
1999	58954	581	822	-241	2	9.9	13.9	-4.0	3.4
2000	58846	509	778	-269	6	8.6	13.2	-4.6	11.8
2001	58737	560	753	-193	5	9.5	12.8	-3.3	8.9
2002	55897	533	710	-177	5	9.5	12.7	-3.2	9.4
2003	55572	549	702	-153	6	9.9	12.6	-2.7	10.9
2004	55282	546	725	-179	7	9.9	13.1	-3.2	12.8
2005	54894	510	794	-284	2	9.3	14.5	-5.2	3.9

**Table. Natural changes of population, Smederevska Palanka**

Year	Number of population	Livebirths	Deaths	Natural increase	Infants deaths	per 1000 population			Infant deaths per 1000 livebirths
						Livebirths	Deaths	Natural increase	
2006	54367	428	750	-322	7	7.9	13.8	-5.9	16.4
2007	53778	477	742	-265	7	8.9	13.8	-4.9	14.7
2008	53225	435	731	-296	3	8.2	13.7	-5.5	6.9
2009	52746	437	679	-242	5	8.3	12.9	-4.6	11.4
2010	52285	388	670	-282	5	7.4	12.8	-5.4	12.9
2011	50359	409	674	-265	1	8.1	13.4	-5.3	2.4
2012	49801	347	794	-447	2	7.0	15.9	-9.0	5.8
2013	49185	327	770	-443	3	6.6	15.7	-9.0	9.2
2014	48611	373	768	-395	1	7.7	15.8	-8.1	2.7
2015	47929	336	839	-503	3	7.0	17.5	-10.5	8.9
2016	47221	336	792	-456	2	7.1	16.8	-9.7	6.0
2017	46543	326	902	-576	2	7.0	19.4	-12.4	6.1
2018	45823	300	833	-533	2	6.5	18.2	-11.6	6.7
2019	45080	281	794	-513	2	6.2	17.6	-11.4	7.1
2020	44341	262	846	-584	1	5.9	19.1	-13.2	3.8
2021	43535	298	1054	-756	0	6.8	24.2	-17.4	0.0
2022	42400	332	862	-530	1	7.8	20.3	-12.5	3.0

Source: Vital Statistics, SORS

## Definitions

### Population size

Number of population in the respective year. The data on the number of population in 1961, 1971, 1981 and 1991 are census data, while for the inter-census years the number of population was calculated as an average inter-census difference. From 2002 are given the population estimates that were calculated according to the census of population results and the annual statistics of natural mechanical population movements.

### Livebirths

Absolute number of live births in the course of a year. Live born child means a child giving vital signs after birth (breathing, i.e. heartbeat), even for the shortest time, regardless the mother's pregnancy duration.

### Deaths

Absolute number of deaths in the course of a year. Deceased is a person that whenever after having been born live, shows permanently stopped vital signs.

### Natural increase

Natural population increase is the number of live births minus the number of deaths.

### Infants deaths

Absolute number of infants deaths in the course of a year. Deceased infant is a child that after having been born live and before aged one year, shows permanently stopped vital signs.

### Livebirths, per 1 000 population

Livebirths rate is the ratio of the number of live births and the population size in the respective year. The number of live births is divided by the population size and then multiplied by 1000.

### Deaths, per 1 000 population

General mortality rate represents the ratio between the number of deaths and the population size in the respective year. The number of deaths is divided by population size and then multiplied by 1000.

### Natural increase, per 1 000 population

Natural population increase rate is the difference between the number of live births and the number of deaths, in relation to the population size in the respective year.

Natural population increase rate = (number of live births - number of deaths) / population size \* 1000

### Infants deaths, per 1 000 livebirths

Infant mortality rate is the ratio of deceased children under 1 year of age and live births in the respective year. The mortality rate is expressed per 1000 live births.

Infant mortality rate = (number of deceased children under 1 year of age / number of live births) \* 1000

## Additional info:



Download all database data in Excel format:

[Data](#)



DevInfo profiles:

[devinfo.stat.gov.rs/SerbiaProfileLauncher/?lang=en](http://devinfo.stat.gov.rs/SerbiaProfileLauncher/?lang=en)



DevInfo online database:

[devinfo.stat.gov.rs/vitalna](http://devinfo.stat.gov.rs/vitalna)



For additional information or questions please contact:

[devinfo@stat.gov.rs](mailto:devinfo@stat.gov.rs)